



阿思丹
ASEEDER
香港

AMT
AUSTRALIAN MATHS TRUST

Australian Mathematics Competition (AMC)

2023 Performance Report

ASDAN China Limited



Planning Assistant



Difficulty

There are **5** difficulty levels, suitable for students from Grade 3 to Grade 12. ASDAN China provides exam papers in English and Chinese for Chinese students to participate.

Applicable grades:

- ★ A - Middle Primary (Grade 3-4)
- ★ B - Upper Primary (Grade 5-6)
- ★ C - Junior (Grade 7-8)
- ★ D - Intermediate (Grade 9-10)
- ★ E - Senior (Grade 11-12)



000 Scoring Criteria

Each level contains **30** questions, including **25** multiple-choice questions and **5** fill-in-the-blank questions. The exam length for levels **A** and **B** (Grade 3-6) is **60** minutes, and for levels **C**, **D** and **E** (Grade 7-12) is **75** minutes.

Total 135 points (no points deducted for no answer or wrong answer)

- ★ Questions 1 to 10 are worth 3 points each.
- ★ Questions 11 to 20 are worth 4 points each.
- ★ Questions 21 to 25 are worth 5 points each.
- ★ Questions 26 to 30 are worth 6, 7, 8, 9 and 10 points respectively.



阿思丹
香港

ASEEDER
HK

AMT
AUSTRALIAN MATHS TRUST



Awards

Global Awards: Peter O'Halloran Award For Excellence is awarded to any student who achieves a perfect score.

National Awards:

- ★ **Prize:** Top 0.3% for A-E
- ★ **High Distinction:** Top 3% for A - D / Top 5% for E
- ★ **Distinction:** Top 20% for A - D/ Top 25% for E
- ★ **Credit:** Top 55% for A - D / Top 60% for E
- ★ **Proficiency:** Students who achieve a preset score, but have not been awarded a Credit (or higher) certificate. (The cutoff score fluctuates each year, averaging around 32 points.)

** Students will be ranked and awarded in each grade group. For example, level A includes grade 3 and 4 students, grade 3 students and grade 4 students will be ranked and awarded respectively in their grade group according to the cut-off percentages, and they will not be ranked and awarded together.*

2023 Cut-off Scores



阿思丹
香港

ASEEDER
HK

AMT
AUSTRALIAN MATHS TRUST

Level	A		B		C		D		E	
Grade	3	4	5	6	7	8	9	10	11	12
Prize	135	135	135	135	132	135	131	131	135	135
High Distinction	118	130	130	130	115	115	113	113	113	127
Distinction	92	107	112	112	95	96	88	89	81	98
Credit	70	85	84	86	78	78	65	67	65	71

**This is the cut-off scores in 2023 according to the cut-off percentages, for reference only !*

Level A Cut-off Scores in the Past Three Years

A	Year	Prize	High Distinction	Distinction	Credit
Grade 3	2023	135	118	92	70
	2022	130	106	81	64
	2021	130	111	84	60
Grade 4	2023	135	130	107	85
	2022	131	112	88	73
	2021	135	120	96	73

Level B Cut-off Scores in the Past Three Years

B	Year	Prize	High Distinction	Distinction	Credit
Grade 5	2023	135	130	112	84
	2022	135	124	96	74
	2021	131	119	90	70
Grade 6	2023	135	130	112	86
	2022	135	124	100	80
	2021	135	122	95	74

Level C Cut-off Scores in the Past Three Years



阿思丹
香港

ASEEDER
HK



AUSTRALIAN MATHS TRUST

C	Year	Prize	High Distinction	Distinction	Credit
Grade 7	2023	132	115	95	78
	2022	135	118	98	78
	2021	135	117	91	72
Grade 8	2023	135	115	96	78
	2022	135	120	100	80
	2021	131	116	94	75

Level D Cut-off Scores in the Past Three Years



阿思丹
香港

ASEEDER
HK



AUSTRALIAN MATHS TRUST

D	Year	Prize	High Distinction	Distinction	Credit
Grade 9	2023	131	113	88	65
	2022	125	108	89	73
	2021	110	92	76	61
Grade 10	2023	131	113	89	67
	2022	126	109	92	76
	2021	109	93	77	64

Level E Cut-off Scores in the Past Three Years



阿思丹
香港

ASEEDER
HK

AMT
AUSTRALIAN MATHS TRUST

E	Year	Prize	High Distinction	Distinction	Credit
Grade 11	2023	135	113	81	65
	2022	135	107	79	61
	2021	109	91	73	56
Grade 12	2023	135	127	98	71
	2022	135	115	82	61
	2021	108	96	75	60



阿思丹
ASEEDER^{HK}

AMT
AUSTRALIAN MATHS TRUST

Australian Mathematics Competition (AMC)

Performance Analysis

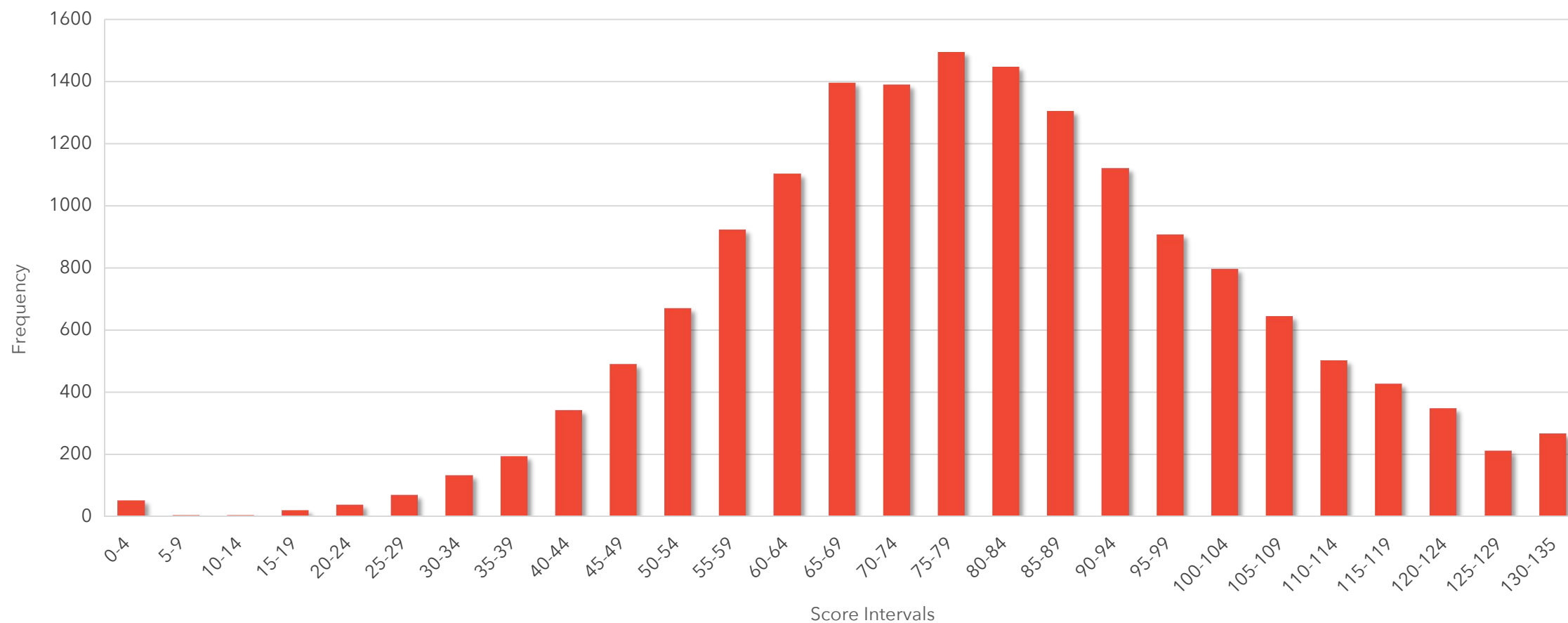
Score Distribution – Level A



阿思丹
香港

ASEEDER
HK

AMT
AUSTRALIAN MATHS TRUST



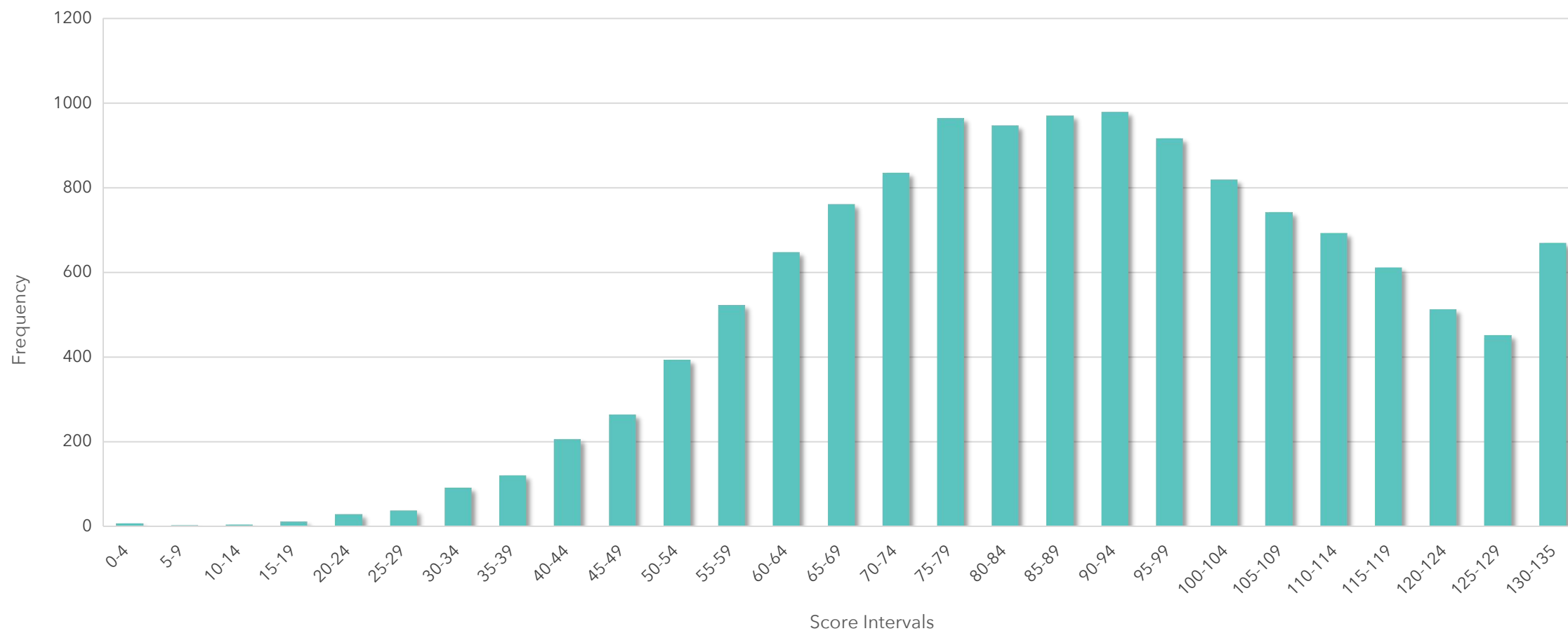
Score Distribution – Level B



阿思丹
香港

ASEEDER
HK

AMT
AUSTRALIAN MATHS TRUST



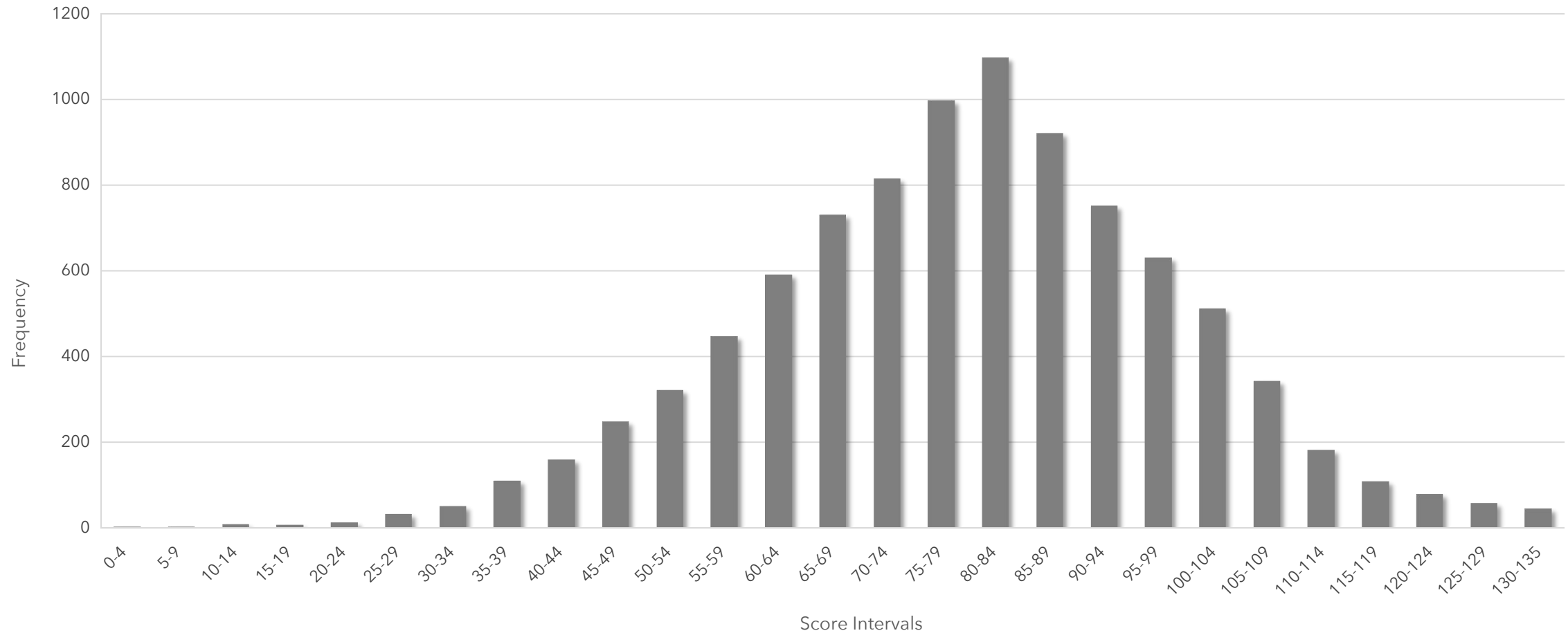
Score Distribution – Level C



阿思丹
香港

ASEEDER
HK

AMT
AUSTRALIAN MATHS TRUST



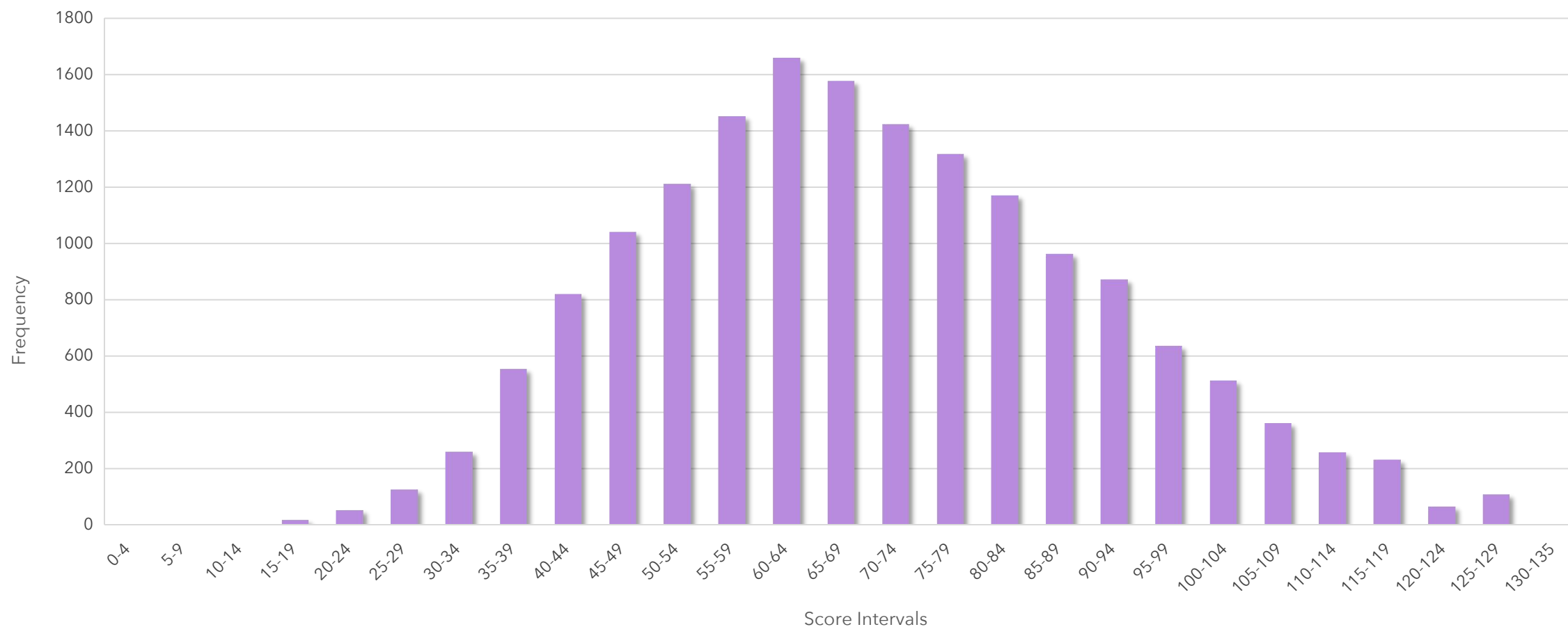
Score Distribution – Level D



阿思丹
香港

ASEEDER
HK

AMT
AUSTRALIAN MATHS TRUST



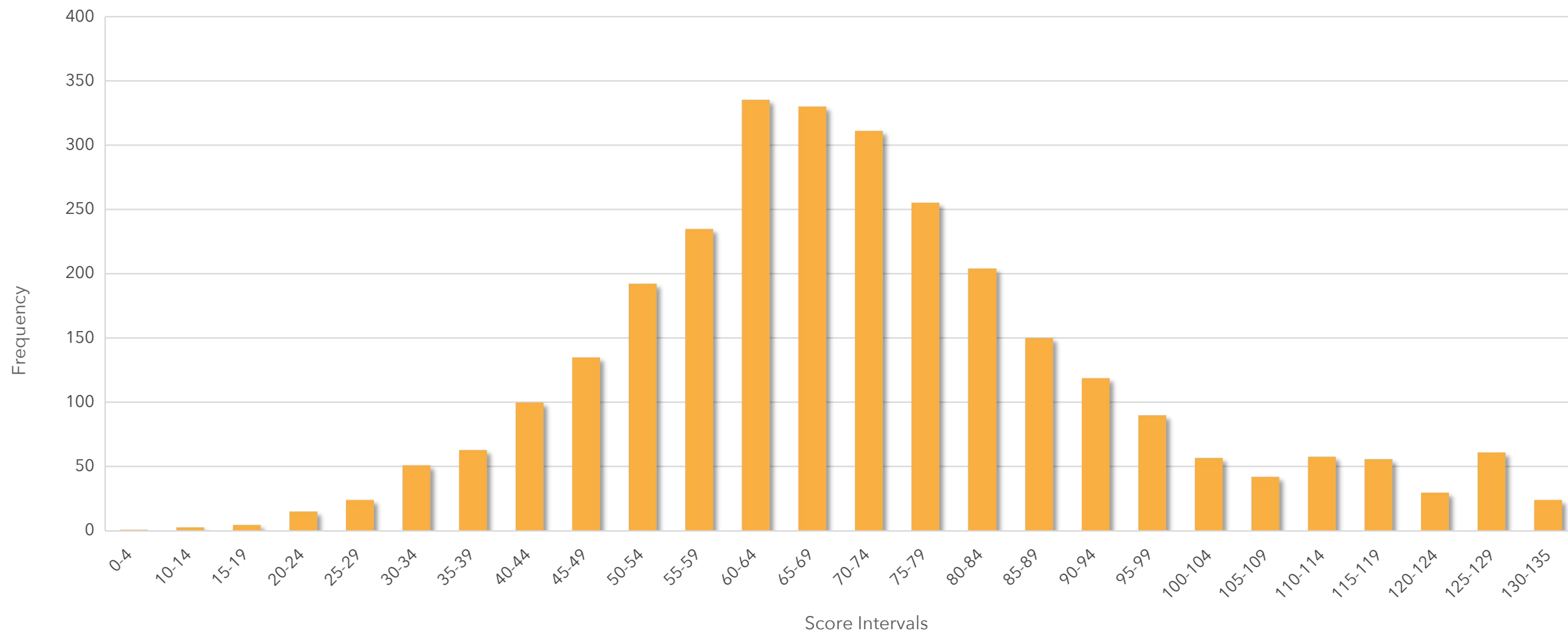
Score Distribution – Level E



阿思丹
香港

ASEEDER
HK

AMT
AUSTRALIAN MATHS TRUST



Highest Scores



阿思丹
香港

ASEEDER
HK

AMT
AUSTRALIAN MATHS TRUST

	A	B	C	D	E
Perfect Score	135	135	135	135	135
National	135	135	135	135	135
Northern	135	135	135	135	135
Eastern	135	135	135	135	135
Southern	135	135	135	125	132
Western	135	135	135	125	135
Central	135	135	120	125	135

The left table shows the highest scores of each geographical region.

**Competition Regional Division :*

Northern : Beijing, Tianjin, Heilongjiang, Jilin, Liaoning, Hebei, Inner Mongolia, Shanxi, Shandong

Eastern : Shanghai, Zhejiang, Jiangsu

Southern : Guangdong, Guangxi, Fujian, Hainan, Hong Kong, Macao, Taiwan

Western : Chongqing, Sichuan, Yunnan, Guizhou, Shaanxi, Gansu, Qinghai, Tibet, Ningxia, Xinjiang

Central : Hunan, Hubei, Anhui, Jiangxi, Henan

Average Scores



阿思丹
香港

ASEEDER
HK

AMT
AUSTRALIAN MATHS TRUST

	A	B	C	D	E
Perfect Score	135	135	135	135	135
National	79.75	88.30	79.24	69.83	71.67
Northern	84.92	93.31	79.03	70.07	71.55
Eastern	80.98	90.05	80.85	72.06	74.04
Southern	78.16	86.21	78.35	64.72	67.53
Western	72.70	80.38	76.15	69.46	75.16
Central	71.60	77.63	74.95	68.49	70.38

The left table shows the average scores of each geographical region.

*Competition Regional Division :

Northern : Beijing, Tianjin, Heilongjiang, Jilin, Liaoning, Hebei, Inner Mongolia, Shanxi, Shandong

Eastern : Shanghai, Zhejiang, Jiangsu

Southern : Guangdong, Guangxi, Fujian, Hainan, Hong Kong, Macao, Taiwan

Western : Chongqing, Sichuan, Yunnan, Guizhou, Shaanxi, Gansu, Qinghai, Tibet, Ningxia, Xinjiang

Central : Hunan, Hubei, Anhui, Jiangxi, Henan

Standard Deviations



阿思丹
香港

A*SEEDER
HK

AMT
AUSTRALIAN MATHS TRUST

	A	B	C	D	E
National	22.86	24.82	19.33	20.89	22.07
Northern	25.01	25.97	20.39	21.34	23.82
Eastern	21.84	23.06	18.49	21.04	21.87
Southern	21.78	25.58	20.23	20.36	21.89
Western	20.78	24.53	18.04	21.42	21.35
Central	20.81	20.69	17.30	18.73	19.60

The smaller the standard deviation is, the smaller the difference of performance among students is.

**Competition Regional Division :*

Northern : Beijing, Tianjin, Heilongjiang, Jilin, Liaoning, Hebei, Inner Mongolia, Shanxi, Shandong

Eastern : Shanghai, Zhejiang, Jiangsu

Southern : Guangdong, Guangxi, Fujian, Hainan, Hong Kong, Macao, Taiwan

Western : Chongqing, Sichuan, Yunnan, Guizhou, Shaanxi, Gansu, Qinghai, Tibet, Ningxia, Xinjiang

Central : Hunan, Hubei, Anhui, Jiangxi, Henan

Degree of Discrimination

A	B	C	D	E
0.41	0.46	0.35	0.38	0.39

Paper with higher degree of discrimination can better discriminate the academic performance among students. The value ranges from -1 to 1. The greater the value is, the more obvious the discrimination is.

According to L.Ebel, a famous American surveyor, when the value is above **0.4**, it indicates that the discrimination of this paper is very good; **0.3 ~ 0.39** indicates that the discrimination is good; **0.2 ~ 0.29** indicates that the discrimination is not very good and needs to be modified; lower than **0.19** indicates that the discrimination is not good and should be eliminated.

As shown in the table above, the degree of discrimination of level **A** and **B** is **very good**, and the degree of discrimination of level **C**, **D** and **E** is **good**.



Topics & Skills

Topics	Skills	Descriptions
Algebra & Function	Logic Reasoning	Including deductive reasoning (applying general rules to specific problems) and inductive reasoning (combining pieces of information to form general rules or conclusions).
Geometry	Dimensional Imagination	2-D and 3-D geometry analysis; analyze problems using graphics based on descriptions.
Number Theory	Arithmetic Capability	Understand the meaning of operations, master the rules of operations, and choose appropriate methods of calculation.
Permutation and Combination	Statistical Analysis	Permutations and combinations (arranging objects or actions in a certain order or pattern based on specific rules or a set of rules), probability and statistics.
Statistics & Probability	Mathematical Application	Solve practical problems; use mathematical knowledge and methods to construct models to solve problems; identify complex problems and review relevant information to formulate and evaluate options and implement solutions.

Level A Topics & Skills



ASEEDER
HK

AMT
AUSTRALIAN MATHS TRUST

No.	Topics	Skills
1	Algebra & Function	Arithmetic Capability
2	Algebra & Function	Arithmetic Capability
3	Geometry	Mathematical Application
4	Algebra & Function	Mathematical Application
5	Statistics & Probability	Statistical Analysis Mathematical Application
6	Geometry	Logic Reasoning
7	Algebra & Function	Mathematical Application Arithmetic Capability
8	Geometry	Dimensional Imagination
9	Geometry	Mathematical Application Logic Reasoning
10	Geometry	Dimensional Imagination

Level A Topics & Skills



阿思丹
香港

ASEEDER
HK

AMT
AUSTRALIAN MATHS TRUST

No.	Topics	Skills
11	Permutation and Combination	Logic Reasoning Mathematical Application Statistical Analysis
12	Algebra & Function	Mathematical Application Arithmetic Capability
13	Algebra & Function	Logic Reasoning Arithmetic Capability
14	Number Theory	Logic Reasoning
15	Algebra & Function	Mathematical Application Logic Reasoning
16	Algebra & Function	Mathematical Application Arithmetic Capability
17	Algebra & Function	Mathematical Application Arithmetic Capability
18	Permutation and Combination	Mathematical Application Logic Reasoning Statistical Analysis Dimensional Imagination
19	Algebra & Function	Mathematical Application Logic Reasoning Arithmetic Capability
20	Algebra & Function	Mathematical Application Logic Reasoning Arithmetic Capability

Level A Topics & Skills



ASEEDER
HK

AMT
AUSTRALIAN MATHS TRUST

No.	Topics	Skills
21	Number Theory	Mathematical Application Logic Reasoning
22	Algebra & Function	Mathematical Application Arithmetic Capability
23	Permutation and Combination	Logic Reasoning Statistical Analysis
24	Geometry	Dimensional Imagination
25	Algebra & Function	Mathematical Application Arithmetic Capability Logic Reasoning
26	Number Theory	Mathematical Application Logic Reasoning Statistical Analysis
27	Algebra & Function	Arithmetic Capability Logic Reasoning
28	Number Theory	Logic Reasoning Arithmetic Capability
29	Number Theory	Mathematical Application Logic Reasoning Arithmetic Capability
30	Algebra & Function	Mathematical Application Arithmetic Capability

Percentages of Correct Answer & Skills Map – Level A

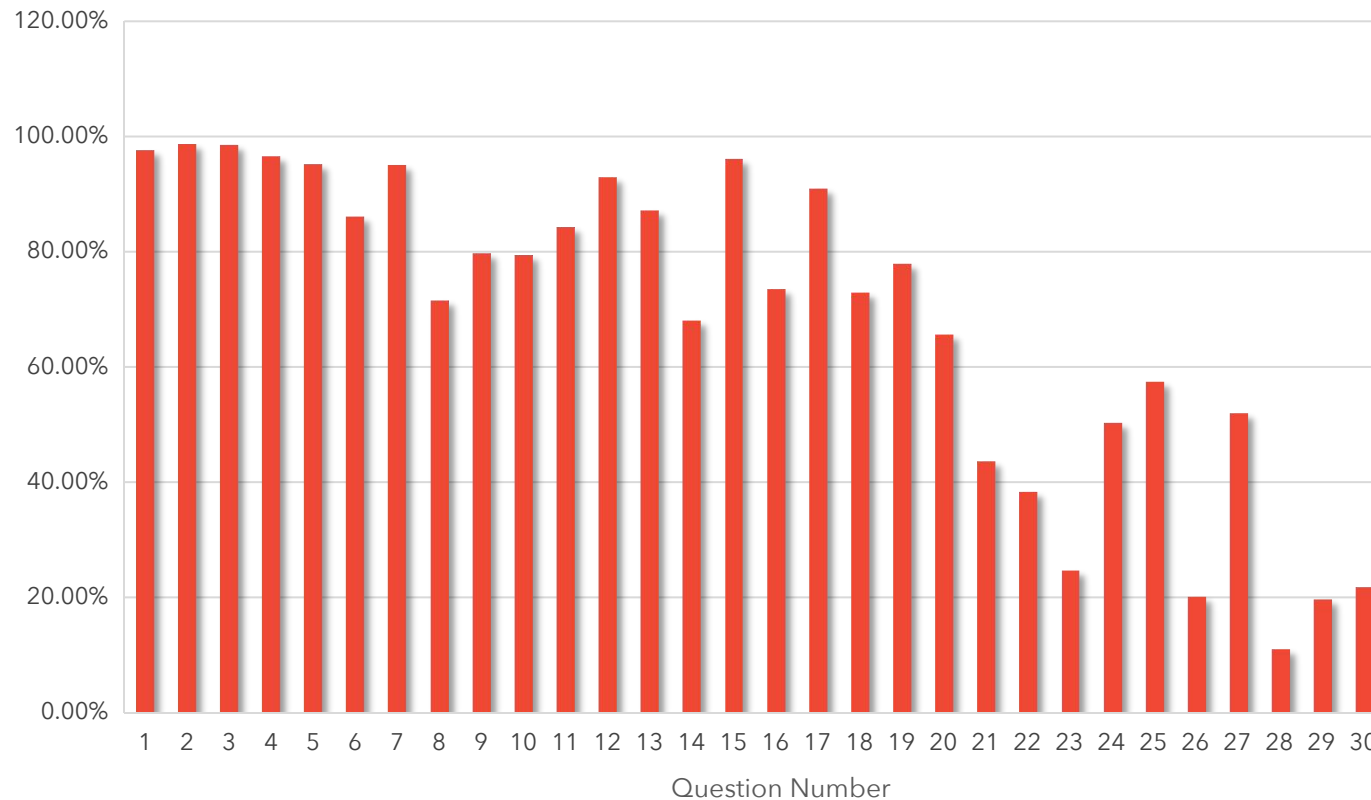


阿思丹
香港

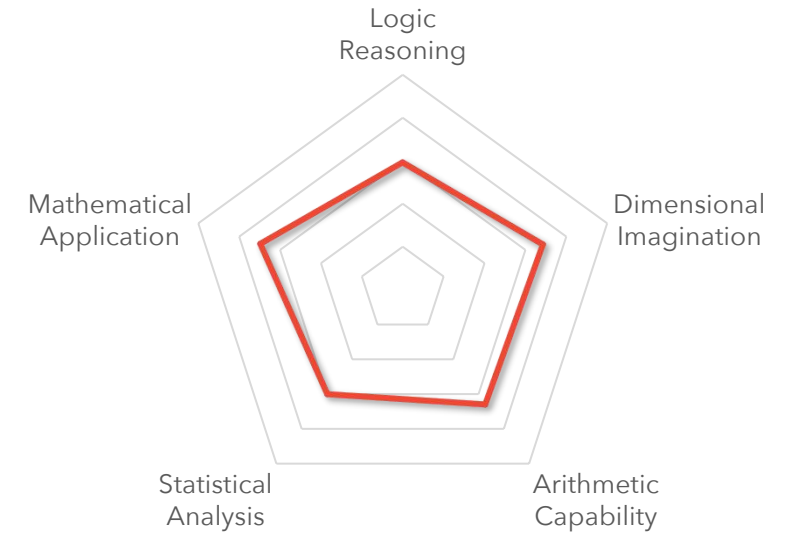
ASEEDER
HK



Percentages of Correct Answer



Skills Map



Logic Reasoning (16Qs: 6,9,11,13-15,18-21,23,25-29)

Dimensional Imagination (4Qs: 8,10,18,24)

Arithmetic Capability (15Qs: 1,2,7,12,13,16,17,19,20,22,24,27-30)

Statistical Analysis (5Qs: 5,11,18,23,26)

Mathematical Application (19Qs: 3-5,7,9,10,11,15-22,25,26,29,30)

Answer Distribution – Level A



阿思丹
香港

ASEEDER
HK

AMT
AUSTRALIAN MATHS TRUST

No.	Correct Answer	A (%)	B (%)	C (%)	D (%)	E (%)	Blank (%)
1	D	0.23%	0.54%	0.87%	97.65%	0.26%	0.43%
2	B	0.28%	98.72%	0.40%	0.05%	0.02%	0.51%
3	A	98.50%	0.34%	0.35%	0.06%	0.04%	0.51%
4	C	0.39%	1.30%	96.60%	0.22%	0.67%	0.79%
5	E	0.43%	1.33%	1.22%	0.99%	95.22%	0.77%
6	D	2.65%	7.90%	1.52%	86.08%	1.30%	0.51%
7	C	0.78%	0.57%	95.05%	2.16%	0.76%	0.65%
8	E	14.40%	3.70%	7.87%	1.33%	71.56%	0.97%
9	D	2.34%	4.11%	7.79%	79.67%	4.73%	1.33%
10	B	4.88%	79.39%	0.85%	12.02%	1.83%	1.01%
11	C	1.17%	9.27%	84.20%	2.67%	2.08%	0.60%
12	C	1.08%	1.16%	92.91%	2.47%	1.68%	0.68%
13	E	1.26%	3.18%	4.19%	3.16%	87.16%	0.95%
14	D	7.32%	10.11%	7.75%	68.02%	4.96%	1.77%
15	A	96.11%	0.56%	0.23%	1.82%	0.45%	0.79%

No.	Correct Answer	A (%)	B (%)	C (%)	D (%)	E (%)	Blank (%)
16	B	4.33%	73.48%	13.20%	4.24%	3.70%	1.01%
17	E	0.95%	2.14%	2.01%	3.14%	90.85%	0.77%
18	E	8.20%	2.71%	4.99%	10.22%	72.88%	0.86%
19	B	8.48%	77.91%	5.83%	4.74%	1.94%	1.07%
20	C	1.63%	6.07%	65.61%	9.22%	15.61%	1.82%
21	D	7.83%	8.12%	12.50%	43.67%	25.71%	2.15%
22	E	15.20%	10.92%	21.73%	10.39%	38.37%	3.25%
23	A	24.75%	20.41%	24.36%	11.13%	15.11%	4.15%
24	B	7.53%	50.30%	29.48%	6.94%	3.98%	1.70%
25	C	9.19%	17.47%	57.45%	6.03%	6.66%	3.18%
26	214	percentage of correct answer	20.22%				
27	285		51.99%				
28	023		11.10%				
29	674		19.73%				
30	630		21.84%				

* Bold figures are percentages of correct answer of each question. The lighter the background is, the better the results are.

Level B Topics & Skills



阿思丹
香港

ASEEDER
HK

AMT
AUSTRALIAN MATHS TRUST

No.	Topics	Skills
1	Geometry	Arithmetic Capability
2	Geometry	Mathematical Application
3	Algebra & Function	Mathematical Application Arithmetic Capability
4	Geometry	Logic Reasoning
5	Algebra & Function	Mathematical Application Logic Reasoning
6	Number Theory	Arithmetic Capability
7	Statistics & Probability	Mathematical Application Logic Reasoning
8	Algebra & Function	Arithmetic Capability Mathematical Application
9	Geometry	Dimensional Imagination
10	Number Theory	Mathematical Application Arithmetic Capability Logic Reasoning

Level B Topics & Skills



ASEEDER
HK



No.	Topics	Skills
11	Statistics & Probability	Mathematical Application Statistical Analysis
12	Geometry	Mathematical Application Dimensional Imagination
13	Geometry	Dimensional Imagination
14	Algebra & Function	Mathematical Application Arithmetic Capability Logic Reasoning
15	Geometry	Dimensional Imagination
16	Geometry	Dimensional Imagination
17	Number Theory	Mathematical Application Logic Reasoning
18	Geometry	Dimensional Imagination Mathematical Application
19	Algebra & Function	Mathematical Application Logic Reasoning
20	Number Theory	Logic Reasoning Arithmetic Capability Mathematical Application

Level B Topics & Skills



阿思丹
香港

ASEEDER
HK

AMT
AUSTRALIAN MATHS TRUST

No.	Topics	Skills
21	Number Theory	Mathematical Application Logic Reasoning
22	Algebra & Function	Mathematical Application Arithmetic Capability
23	Permutation and Combination	Logic Reasoning Dimensional Imagination
24	Number Theory	Logic Reasoning Arithmetic Capability
25	Algebra & Function	Mathematical Application Arithmetic Capability
26	Algebra & Function	Logic Reasoning Arithmetic Capability
27	Algebra & Function	Arithmetic Capability
28	Algebra & Function	Logic Reasoning Arithmetic Capability
29	Algebra & Function	Mathematical Application Arithmetic Capability
30	Permutation and Combination	Mathematical Application Logic Reasoning Statistical Analysis Dimensional Imagination

Percentages of Correct Answer & Skills Map – Level B

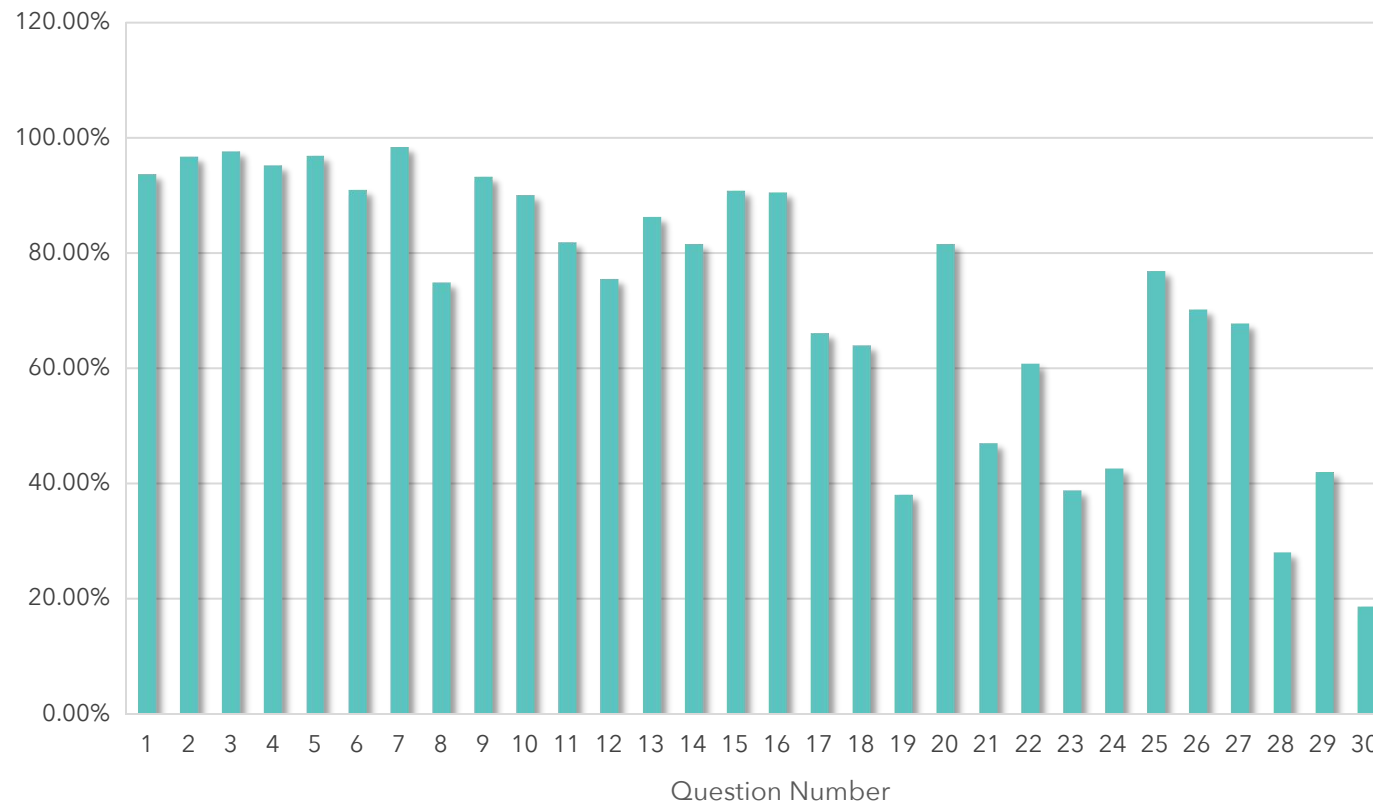


阿思丹
香港

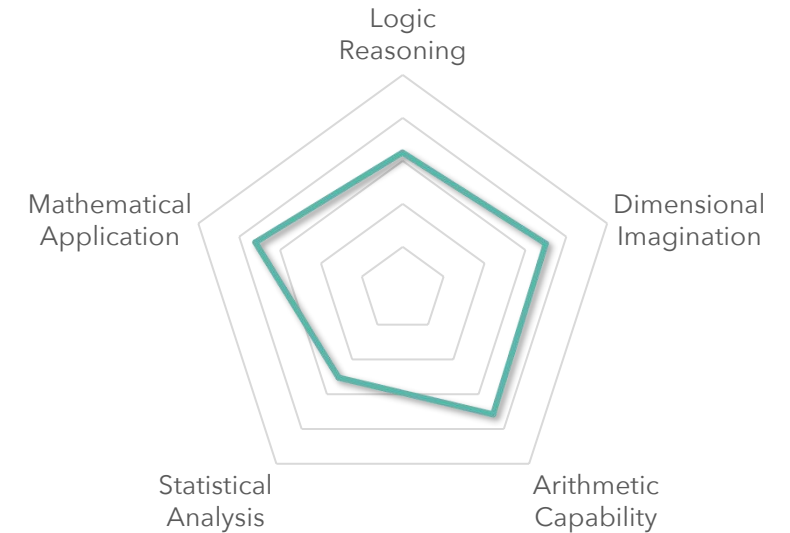
ASEEDER
HK

AMT
AUSTRALIAN MATHS TRUST

Percentages of Correct Answer



Skills Map



Logic Reasoning (14Qs: 4,5,7,10,14,17,19-21,23,24,26,28, 30)

Dimensional Imagination (8Qs: 9,12,13,15,16,18,23,30)

Arithmetic Capability (14Qs: 1,3,6,8,10,14,20,21,24-29)

Statistical Analysis (2Qs: 11,30)

Mathematical Application (18Qs: 2,3,5,7,8,10-12,14,17-22,25,29,30)

Answer Distribution – Level B



阿思丹
香港

ASEEDER
HK

AMT
AUSTRALIAN MATHS TRUST

No.	Correct Answer	A (%)	B (%)	C (%)	D (%)	E (%)	Blank (%)
1	D	1.89%	0.82%	2.55%	93.77%	0.81%	0.16%
2	B	1.99%	96.83%	0.33%	0.42%	0.23%	0.17%
3	C	0.20%	0.21%	97.62%	1.33%	0.39%	0.25%
4	B	0.14%	95.24%	3.48%	0.72%	0.20%	0.22%
5	C	1.16%	0.65%	96.89%	0.57%	0.32%	0.40%
6	D	0.28%	0.29%	5.45%	91.06%	2.70%	0.20%
7	A	98.44%	0.11%	0.19%	0.83%	0.17%	0.25%
8	D	0.71%	22.30%	0.79%	74.99%	0.92%	0.26%
9	B	1.32%	93.22%	0.14%	4.61%	0.47%	0.25%
10	B	3.65%	90.03%	3.14%	1.23%	1.47%	0.47%
11	E	1.46%	1.47%	6.28%	8.65%	81.90%	0.22%
12	A	75.57%	4.50%	1.36%	0.96%	17.35%	0.26%
13	D	0.54%	5.83%	5.50%	86.29%	1.44%	0.39%
14	C	0.74%	2.81%	81.66%	4.19%	10.12%	0.48%
15	D	3.88%	1.05%	1.32%	90.89%	2.23%	0.60%

No.	Correct Answer	A (%)	B (%)	C (%)	D (%)	E (%)	Blank (%)
16	E	1.14%	1.89%	2.62%	2.71%	90.62%	0.97%
17	C	5.39%	8.37%	66.11%	16.84%	2.27%	0.98%
18	B	6.36%	64.06%	21.16%	5.60%	2.18%	0.61%
19	E	15.99%	16.54%	10.21%	17.17%	38.18%	1.88%
20	A	81.61%	1.70%	10.04%	4.87%	1.14%	0.55%
21	E	2.87%	29.01%	13.38%	6.75%	47.02%	0.82%
22	D	6.09%	10.89%	14.19%	60.87%	6.69%	1.25%
23	C	14.33%	19.11%	38.84%	13.11%	12.87%	1.62%
24	D	13.52%	17.64%	16.89%	42.74%	5.05%	4.03%
25	D	4.87%	7.37%	5.70%	76.86%	2.89%	2.23%
26	285	percentage of correct answer	70.23%				
27	252		67.85%				
28	711		28.07%				
29	630		42.02%				
30	925		18.70%				

* Bold figures are percentages of correct answer of each question. The lighter the background is, the better the results are.

Level C Topics & Skills



阿思丹
香港

A*SEEDER
HK

AMT
AUSTRALIAN MATHS TRUST

No.	Topics	Skills
1	Algebra & Function	Mathematical Application Dimensional Imagination
2	Algebra & Function	Arithmetic Capability
3	Algebra & Function	Arithmetic Capability Mathematical Application
4	Geometry	Dimensional Imagination
5	Algebra & Function	Arithmetic Capability Mathematical Application
6	Algebra & Function	Arithmetic Capability
7	Geometry	Dimensional Imagination
8	Statistics & Probability	Mathematical Application Statistical Analysis
9	Algebra & Function	Mathematical Application Arithmetic Capability
10	Geometry	Arithmetic Capability

Level C Topics & Skills



阿思丹
香港

ASEEDER
HK

AMT
AUSTRALIAN MATHS TRUST

No.	Topics	Skills
11	Algebra & Function	Mathematical Application Arithmetic Capability
12	Permutation and Combination	Logic Reasoning Statistical Analysis
13	Number Theory	Logic Reasoning Arithmetic Capability
14	Algebra & Function	Mathematical Application Arithmetic Capability
15	Permutation and Combination	Logic Reasoning Statistical Analysis
16	Algebra & Function	Mathematical Application Logic Reasoning
17	Number Theory	Arithmetic Capability Statistical Analysis
18	Geometry	Mathematical Application Arithmetic Capability Dimensional Imagination
19	Permutation and Combination	Mathematical Application Logic Reasoning Statistical Analysis
20	Algebra & Function	Mathematical Application Arithmetic Capability Logic Reasoning

Level C Topics & Skills



阿思丹
香港

ASEEDER
HK

AMT
AUSTRALIAN MATHS TRUST

No.	Topics	Skills
21	Algebra & Function	Arithmetic Capability
22	Number Theory	Logic Reasoning
23	Algebra & Function	Mathematical Application Arithmetic Capability
24	Permutation and Combination	Logic Reasoning Statistical Analysis Mathematical Application
25	Geometry	Dimensional Imagination
26	Number Theory	Arithmetic Capability Logic Reasoning
27	Algebra & Function	Logic Reasoning Statistical Analysis
28	Permutation and Combination	Dimensional Imagination Statistical Analysis
29	Permutation and Combination	Arithmetic Capability Logic Reasoning Statistical Analysis
30	Number Theory	Logic Reasoning Statistical Analysis

Percentages of Correct Answer & Skills Map – Level C

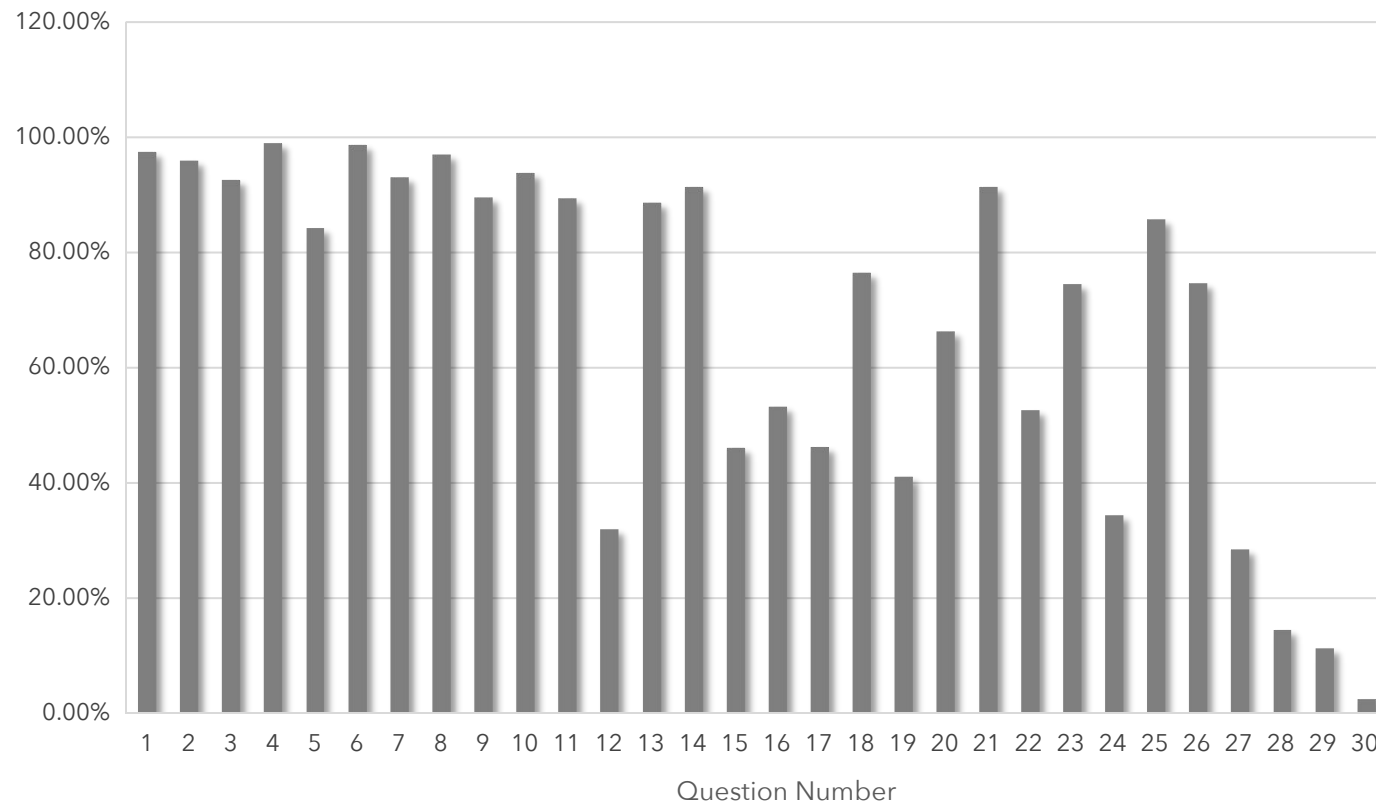


阿思丹
香港

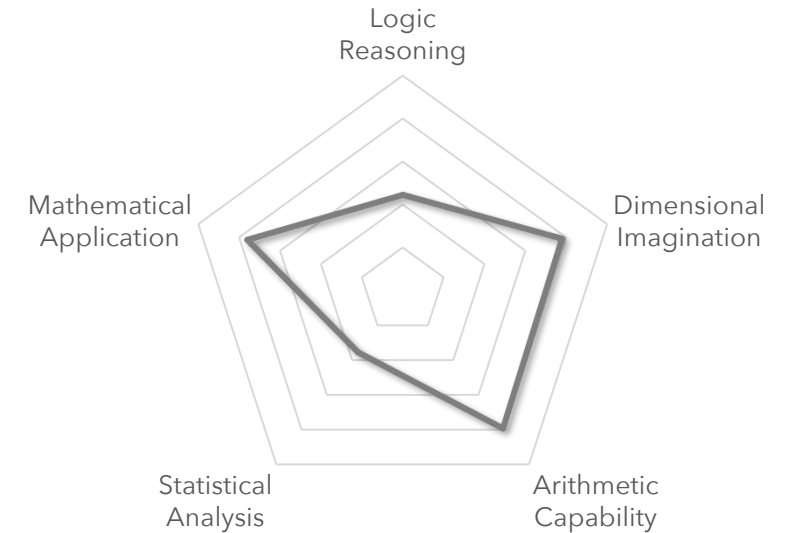
A*SEEDER
HK

AMT
AUSTRALIAN MATHS TRUST

Percentages of Correct Answer



Skills Map



Logic Reasoning (12Qs: 12,13,15,16,19,20,22,24,26,27,29,30)

Dimensional Imagination (6Qs: 1,4,7,18,25,28)

Arithmetic Capability (16Qs: 2,3,5,6,9-11,13,14,17,18,20,21,23,25,29)

Statistical Analysis (10Qs: 8,12,15,17,19,24,27-30)

Mathematical Application (13Qs: 1,3,5,8,9,11,14,16,18-20,23,24)

Answer Distribution – Level C



No.	Correct Answer	A (%)	B (%)	C (%)	D (%)	E (%)	Blank (%)
1	A	97.22%	0.73%	1.48%	0.15%	0.35%	0.06%
2	B	0.15%	95.75%	0.22%	3.13%	0.65%	0.06%
3	A	92.37%	6.92%	0.31%	0.24%	0.09%	0.08%
4	A	98.79%	0.48%	0.05%	0.26%	0.34%	0.09%
5	B	5.30%	84.13%	4.58%	4.96%	0.80%	0.23%
6	C	0.28%	0.39%	98.43%	0.29%	0.38%	0.17%
7	E	0.99%	2.03%	2.56%	1.29%	92.94%	0.12%
8	A	96.77%	1.07%	0.34%	1.16%	0.39%	0.24%
9	D	0.23%	6.25%	2.79%	89.42%	1.13%	0.18%
10	D	3.93%	0.83%	0.80%	93.67%	0.55%	0.21%
11	C	0.34%	7.71%	89.24%	1.95%	0.63%	0.13%
12	C	7.94%	22.18%	31.94%	25.02%	12.26%	0.66%
13	D	1.63%	2.80%	4.14%	88.50%	2.19%	0.72%
14	D	0.45%	3.84%	3.11%	91.27%	1.09%	0.22%
15	B	7.87%	46.04%	21.52%	6.88%	16.49%	1.20%

No.	Correct Answer	A (%)	B (%)	C (%)	D (%)	E (%)	Blank (%)
16	B	3.13%	53.25%	19.20%	11.44%	12.26%	0.63%
17	C	6.75%	2.79%	46.22%	2.75%	41.04%	0.44%
18	E	5.35%	8.87%	3.47%	5.45%	76.43%	0.40%
19	A	41.05%	22.01%	4.50%	11.50%	20.44%	0.50%
20	B	4.43%	66.17%	18.25%	5.11%	5.22%	0.76%
21	D	1.33%	2.15%	3.59%	91.24%	1.39%	0.28%
22	A	52.56%	18.91%	13.93%	8.82%	3.56%	2.20%
23	B	5.04%	74.37%	11.95%	5.05%	2.53%	1.01%
24	B	19.44%	34.39%	16.90%	13.55%	14.49%	1.17%
25	E	1.66%	3.64%	6.47%	1.72%	85.67%	0.73%
26	541						74.60%
27	034						28.51%
28	351						14.62%
29	164						11.43%
30	810						2.68%

* Bold figures are percentages of correct answer of each question. The lighter the background is, the better the results are.

Level D Topics & Skills



A*SEEDER
HK



No.	Topics	Skills
1	Algebra & Function	Mathematical Application Arithmetic Capability
2	Geometry	Arithmetic Capability
3	Algebra & Function	Arithmetic Capability
4	Geometry	Arithmetic Capability
5	Algebra & Function	Arithmetic Capability
6	Geometry	Arithmetic Capability
7	Algebra & Function	Mathematical Application Arithmetic Capability
8	Algebra & Function	Arithmetic Capability
9	Algebra & Function	Arithmetic Capability
10	Geometry	Arithmetic Capability

Level D Topics & Skills



阿思丹
香港

ASEEDER
HK

AMT
AUSTRALIAN MATHS TRUST

No.	Topics	Skills
11	Permutation and Combination	Statistical Analysis
12	Number Theory	Logic Reasoning Arithmetic Capability
13	Geometry	Arithmetic Capability
14	Permutation and Combination	Logic Reasoning Arithmetic Capability
15	Algebra & Function	Mathematical Application Arithmetic Capability
16	Algebra & Function	Mathematical Application Arithmetic Capability
17	Geometry	Arithmetic Capability
18	Algebra & Function	Arithmetic Capability
19	Geometry	Arithmetic Capability Mathematical Application
20	Algebra & Function	Mathematical Application Arithmetic Capability Logic Reasoning

Level D Topics & Skills



No.	Topics	Skills
21	Geometry	Mathematical Application Dimensional Imagination
22	Number Theory	Arithmetic Capability
23	Geometry	Arithmetic Capability
24	Number Theory	Arithmetic Capability
25	Geometry	Arithmetic Capability
26	Number Theory	Arithmetic Capability Logic Reasoning Mathematical Application
27	Geometry	Arithmetic Capability
28	Number Theory	Logic Reasoning Arithmetic Capability
29	Geometry	Arithmetic Capability Dimensional Imagination Mathematical Application
30	Permutation and Combination	Logic Reasoning Statistical Analysis

Percentages of Correct Answer & Skills Map – Level D

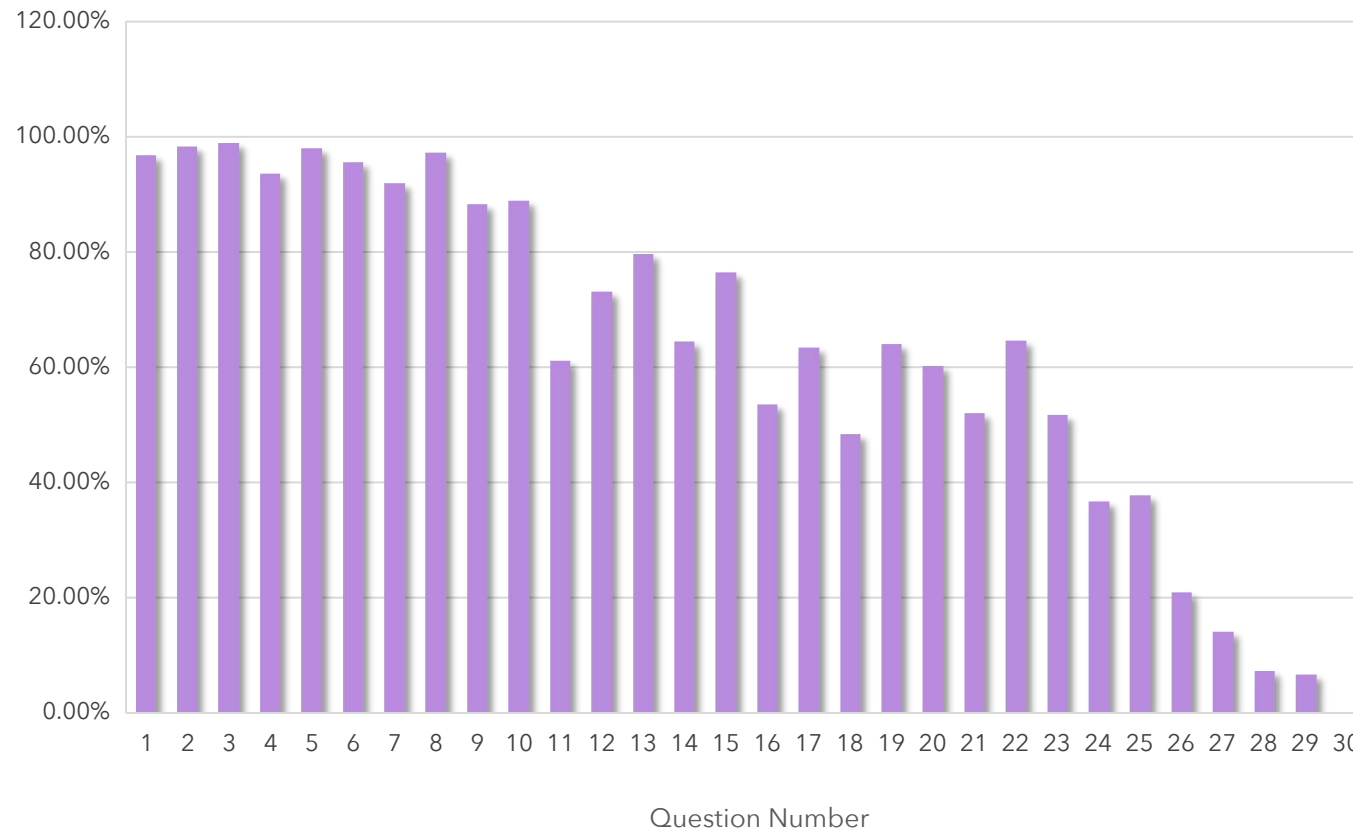


阿思丹
香港

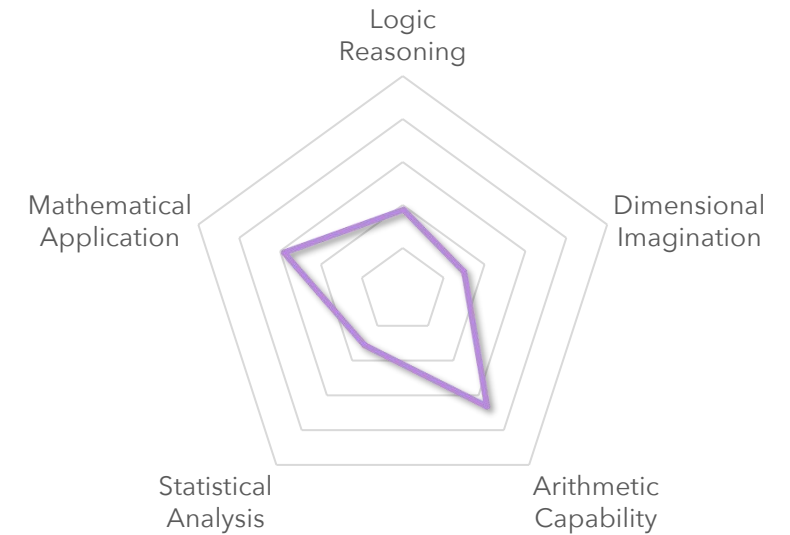
A*SEEDER
HK

AMT
AUSTRALIAN MATHS TRUST

Percentages of Correct Answer



Skills Map



Logic Reasoning (6Qs: 12,14,20,26,28,30)

Dimensional Imagination (2Qs: 21,29)

Arithmetic Capability (27Qs: 1-10,12-20,22-29)

Statistical Analysis (2Qs: 11,30)

Mathematical Application (9Qs: 1,7,15,16,19-21,26,29)

Answer Distribution – Level D



阿思丹
香港

ASEEDER
HK

AMT
AUSTRALIAN MATHS TRUST

No.	Correct Answer	A (%)	B (%)	C (%)	D (%)	E (%)	Blank (%)
1	C	0.30%	0.68%	96.81%	1.02%	1.13%	0.04%
2	E	0.07%	0.27%	0.38%	0.94%	98.27%	0.06%
3	C	0.19%	0.11%	98.91%	0.47%	0.23%	0.08%
4	E	0.92%	1.71%	2.40%	1.21%	93.63%	0.13%
5	C	0.04%	0.22%	98.00%	1.49%	0.11%	0.16%
6	D	2.73%	0.59%	0.59%	95.62%	0.38%	0.07%
7	C	0.14%	5.87%	91.91%	1.64%	0.36%	0.08%
8	A	97.19%	0.20%	0.38%	1.98%	0.13%	0.09%
9	D	6.36%	0.72%	0.83%	88.31%	3.68%	0.10%
10	C	0.78%	0.71%	88.96%	6.19%	3.14%	0.20%
11	C	7.76%	13.93%	61.21%	11.63%	4.94%	0.49%
12	E	16.40%	3.96%	3.37%	2.64%	73.20%	0.37%
13	E	4.19%	7.54%	2.93%	5.50%	79.62%	0.14%
14	B	4.79%	64.53%	9.57%	17.84%	2.52%	0.69%
15	D	1.85%	4.49%	11.01%	76.44%	5.64%	0.50%

No.	Correct Answer	A (%)	B (%)	C (%)	D (%)	E (%)	Blank (%)
16	B	9.95%	53.57%	18.85%	11.66%	4.94%	0.89%
17	A	63.45%	8.10%	13.91%	5.26%	8.25%	0.93%
18	B	7.74%	48.43%	24.82%	12.04%	5.41%	1.37%
19	B	14.79%	64.09%	7.71%	5.22%	7.31%	0.76%
20	E	2.06%	7.81%	20.17%	8.97%	60.30%	0.60%
21	E	7.14%	8.23%	10.53%	21.24%	52.09%	0.63%
22	D	6.29%	8.01%	14.55%	64.63%	5.08%	1.20%
23	A	51.83%	14.26%	16.02%	11.43%	5.13%	1.12%
24	C	14.01%	20.70%	36.73%	18.78%	6.99%	2.42%
25	C	7.25%	21.76%	37.82%	15.14%	16.46%	1.29%
26	301	percentage of correct answer	9.49%				
27	097		8.55%				
28	062		8.64%				
29	375		7.68%				
30	170		2.70%				

* Bold figures are percentages of correct answer of each question. The lighter the background is, the better the results are.

Level E Topics & Skills



阿思丹
香港

ASEEDER
HK

AMT
AUSTRALIAN MATHS TRUST

No.	Topics	Skills
1	Algebra & Function	Arithmetic Capability
2	Geometry	Arithmetic Capability
3	Algebra & Function	Arithmetic Capability
4	Algebra & Function	Arithmetic Capability
5	Geometry	Arithmetic Capability
6	Geometry	Arithmetic Capability
7	Number Theory	Logic Reasoning Arithmetic Capability
8	Algebra & Function	Mathematical Application Arithmetic Capability
9	Geometry	Arithmetic Capability
10	Number Theory	Logic Reasoning Arithmetic Capability

Level E Topics & Skills



ASEEDER
HK



No.	Topics	Skills
11	Algebra & Function	Arithmetic Capability
12	Permutation and Combination	Statistical Analysis Mathematical Application
13	Algebra & Function	Arithmetic Capability
14	Permutation and Combination	Statistical Analysis Mathematical Application
15	Algebra & Function	Logic Reasoning
16	Algebra & Function	Arithmetic Capability
17	Geometry	Arithmetic Capability
18	Statistics & Probability	Statistical Analysis Mathematical Application Arithmetic Capability
19	Algebra & Function	Arithmetic Capability Logic Reasoning
20	Geometry	Dimensional Imagination Arithmetic Capability

Level E Topics & Skills



阿思丹
香港

ASEEDER
HK

AMT
AUSTRALIAN MATHS TRUST

No.	Topics	Skills
21	Number Theory	Arithmetic Capability
22	Algebra & Function	Mathematical Application Arithmetic Capability
23	Number Theory	Arithmetic Capability
24	Geometry	Dimensional Imagination Arithmetic Capability Mathematical Application
25	Geometry	Dimensional Imagination Arithmetic Capability
26	Permutation and Combination	Statistical Analysis
27	Algebra & Function	Arithmetic Capability Logic Reasoning
28	Geometry	Mathematical Application Arithmetic Capability Dimensional Imagination
29	Permutation and Combination	Statistical Analysis Mathematical Application
30	Permutation and Combination	Statistical Analysis Mathematical Application

Percentages of Correct Answer & Skills Map – Level E

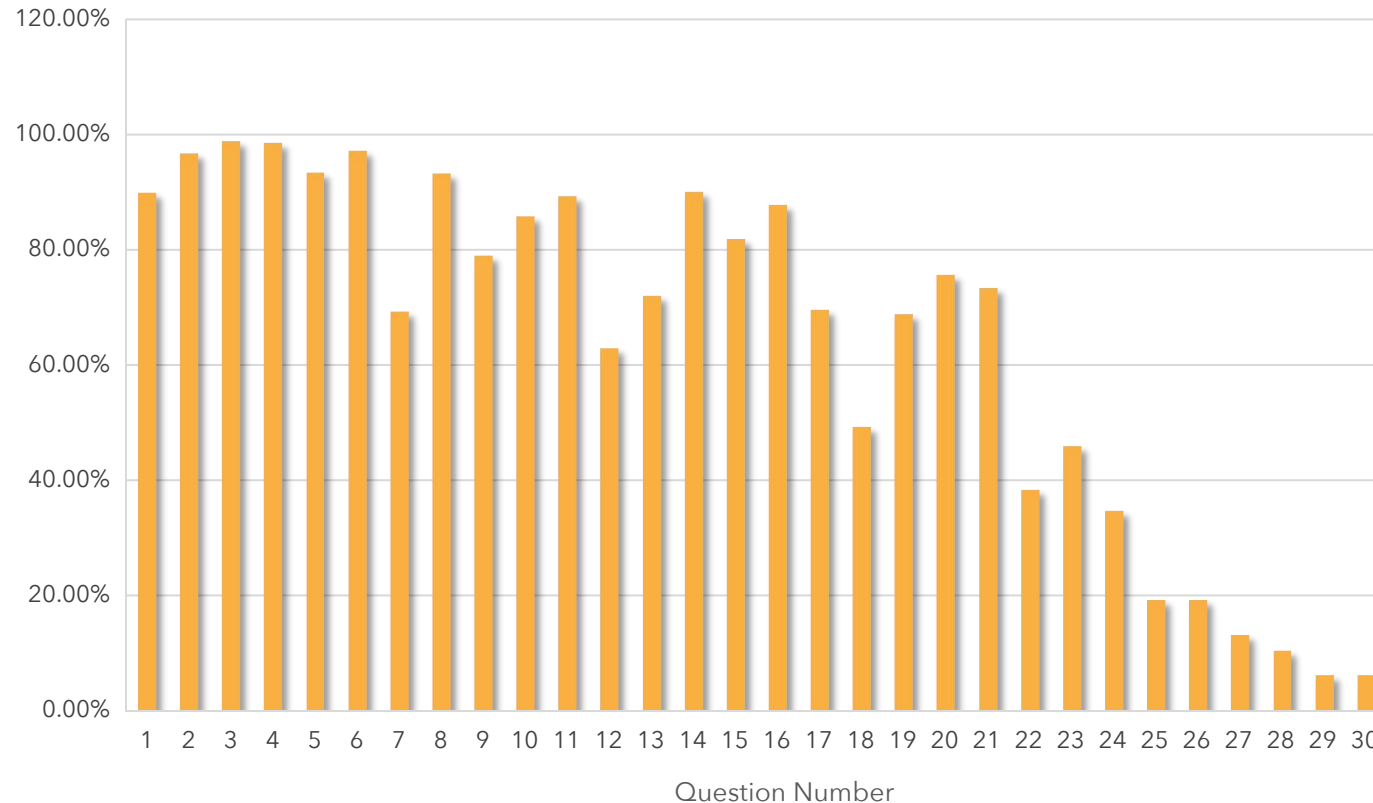


阿思丹
香港

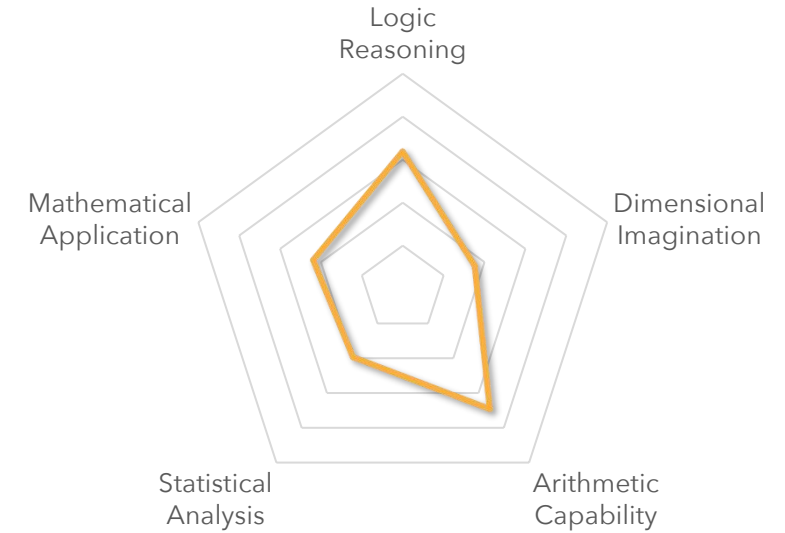
A*SEEDER
HK

AMT
AUSTRALIAN MATHS TRUST

Percentages of Correct Answer



Skills Map



Logic Reasoning (5Qs: 7,10,15,19,27)

Dimensional Imagination (4Qs: 20,24,25,28)

Arithmetic Capability (24Qs: 1-11,13,16-25,27,28)

Statistical Analysis (6Qs: 12,14,18,26,29,30)

Mathematical Application (9Qs: 8,12,14,18,22,24,28-30)

Answer Distribution – Level E



阿思丹
香港

ASEEDEER
HK

AMT
AUSTRALIAN MATHS TRUST

No.	Correct Answer	A (%)	B (%)	C (%)	D (%)	E (%)	Blank (%)
1	B	7.88%	89.92%	1.97%	0.10%	0.07%	0.07%
2	D	1.73%	0.75%	0.48%	96.74%	0.27%	0.03%
3	C	0.03%	0.20%	98.78%	0.61%	0.27%	0.10%
4	E	0.17%	0.24%	0.41%	0.48%	98.51%	0.20%
5	A	93.41%	2.44%	3.02%	0.44%	0.61%	0.07%
6	B	0.58%	97.22%	0.88%	0.64%	0.64%	0.03%
7	A	69.31%	4.01%	7.20%	8.08%	10.22%	1.02%
8	D	0.24%	2.41%	2.89%	93.21%	1.02%	0.20%
9	A	79.02%	7.74%	9.50%	2.99%	0.48%	0.24%
10	E	1.09%	2.78%	3.19%	6.92%	85.74%	0.17%
11	B	4.18%	89.31%	3.77%	1.60%	0.98%	0.14%
12	B	4.34%	63.00%	18.77%	9.37%	4.18%	0.27%
13	C	5.30%	5.06%	72.10%	12.80%	4.11%	0.54%
14	C	1.73%	2.14%	89.99%	3.84%	2.00%	0.24%
15	D	3.70%	4.62%	6.82%	81.84%	2.48%	0.48%

No.	Correct Answer	A (%)	B (%)	C (%)	D (%)	E (%)	Blank (%)
16	D	2.38%	1.19%	3.56%	87.78%	4.85%	0.14%
17	A	69.65%	8.69%	15.27%	3.39%	2.27%	0.54%
18	E	9.84%	11.07%	7.81%	21.01%	49.32%	0.61%
19	B	10.93%	68.91%	9.10%	5.36%	5.09%	0.44%
20	B	6.79%	75.66%	9.61%	4.65%	2.68%	0.51%
21	D	6.25%	5.70%	9.95%	73.42%	4.07%	0.31%
22	A	38.32%	21.69%	16.43%	14.56%	6.82%	1.49%
23	C	6.31%	13.48%	45.93%	22.13%	10.18%	1.32%
24	B	13.82%	34.83%	15.34%	20.57%	12.70%	1.66%
25	E	29.40%	25.80%	15.92%	6.55%	19.35%	1.97%
26	247	percentage of correct answer	19.25%				
27	185		13.27%				
28	375		10.59%				
29	330		6.28%				
30	198		6.28%				

* Bold figures are percentages of correct answer of each question. The lighter the background is, the better the results are.



阿思丹
ASEEDER^{HK}

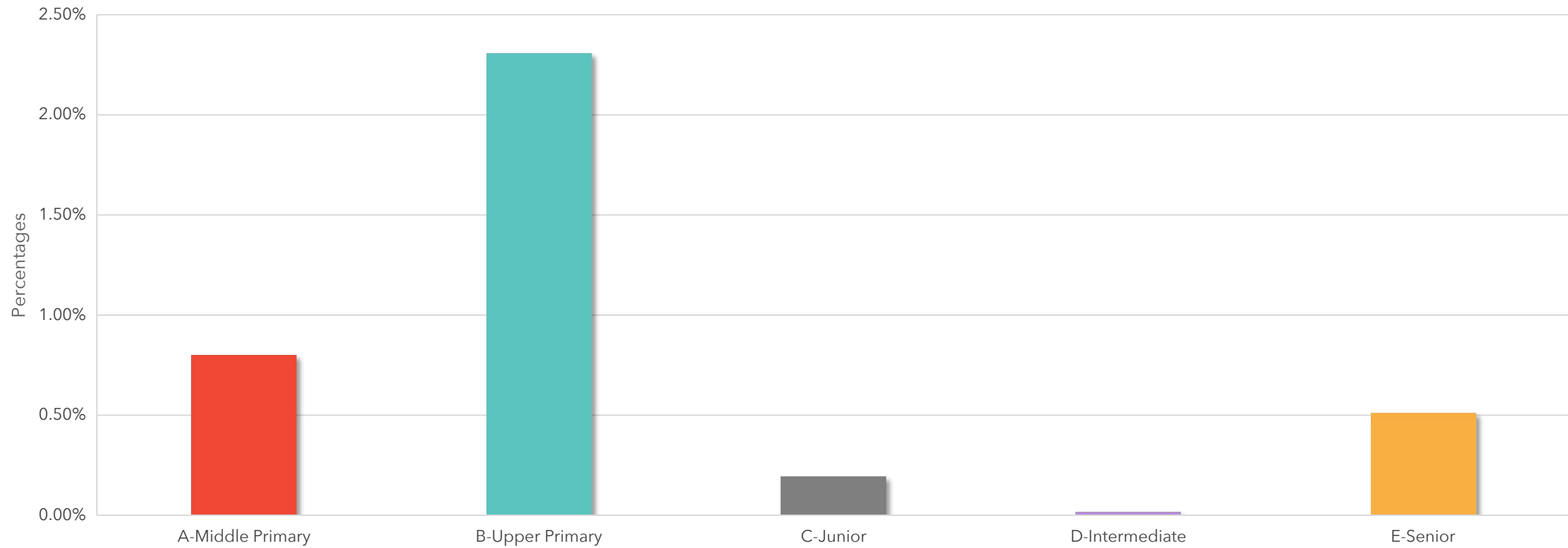
AMT
AUSTRALIAN MATHS TRUST

Australian Mathematics Competition (AMC)

Award-winning Results

Global Awards Distribution

Peter O'Halloran Award for Excellence



National Awards Distribution

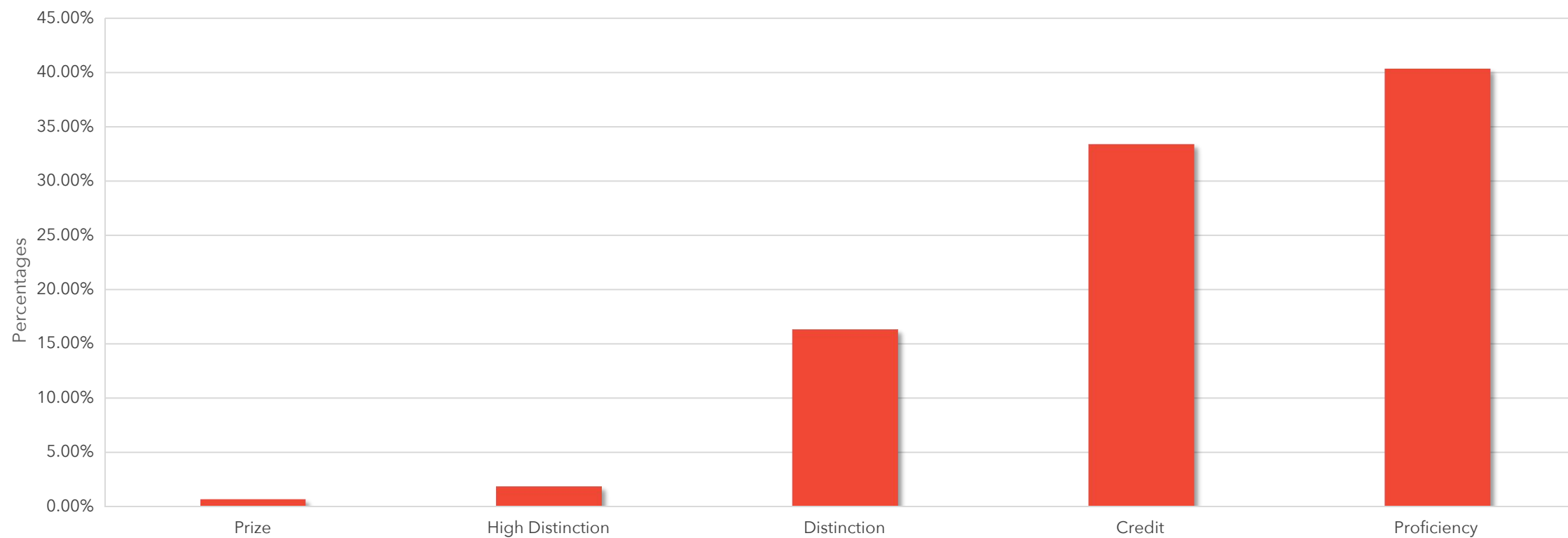


阿思丹
香港

ASEEDER
HK

AMT
AUSTRALIAN MATHS TRUST

Level A



National Awards Distribution

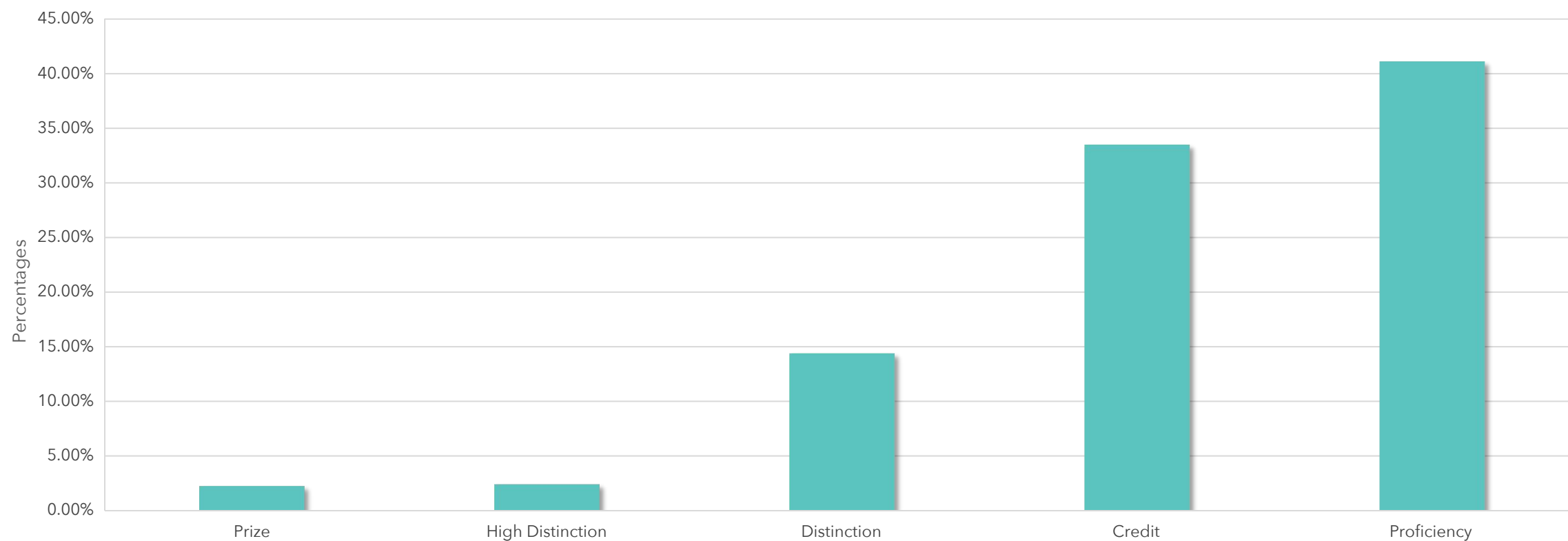


阿思丹
香港

ASEEDER
HK

AMT
AUSTRALIAN MATHS TRUST

Level B



National Awards Distribution

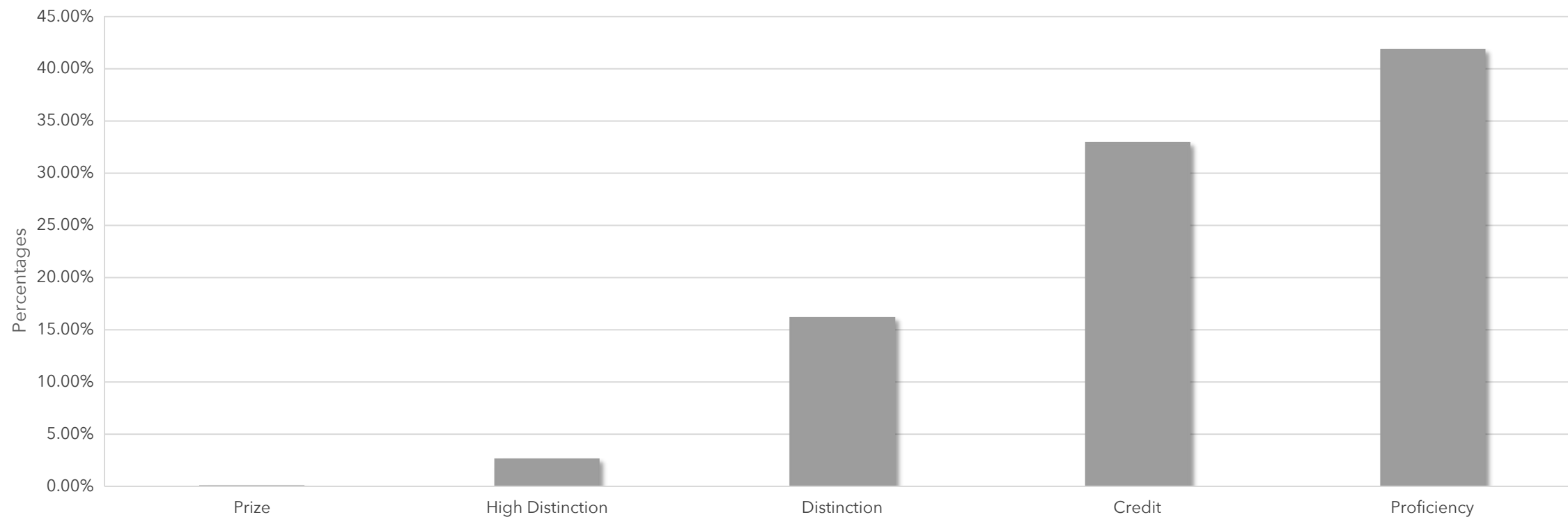
Level C



阿思丹
香港

ASEEDER
HK

AMT
AUSTRALIAN MATHS TRUST



National Awards Distribution

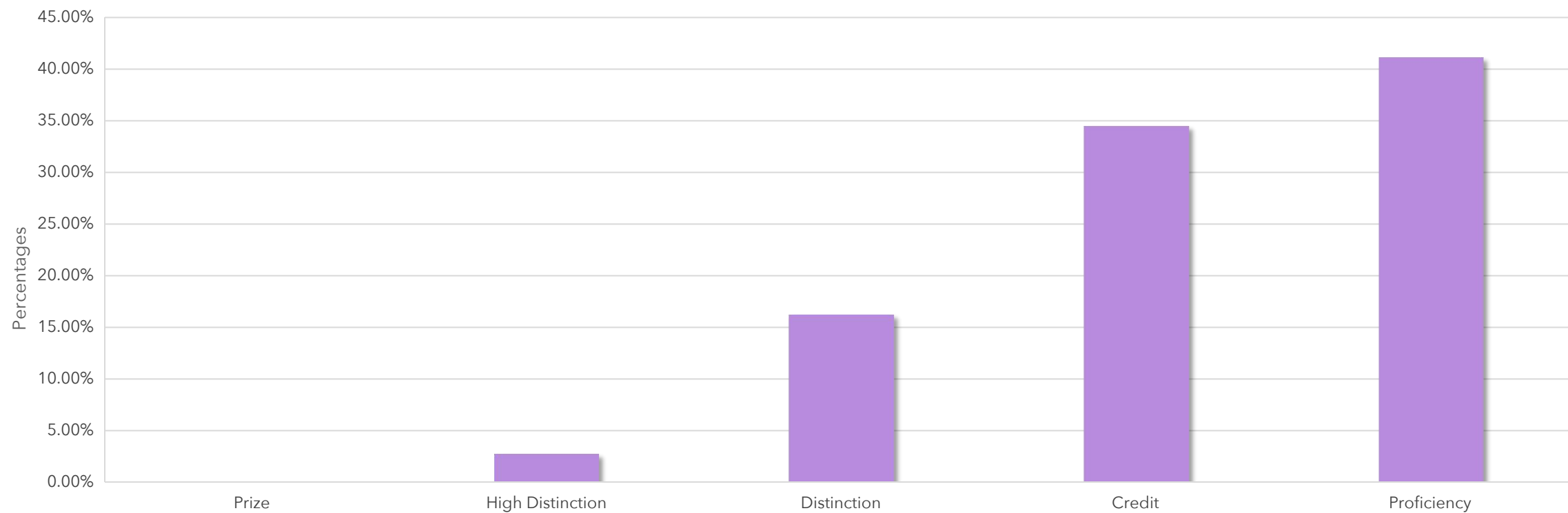
Level D



阿思丹
香港

ASEEDER
HK

AMT
AUSTRALIAN MATHS TRUST



National Awards Distribution

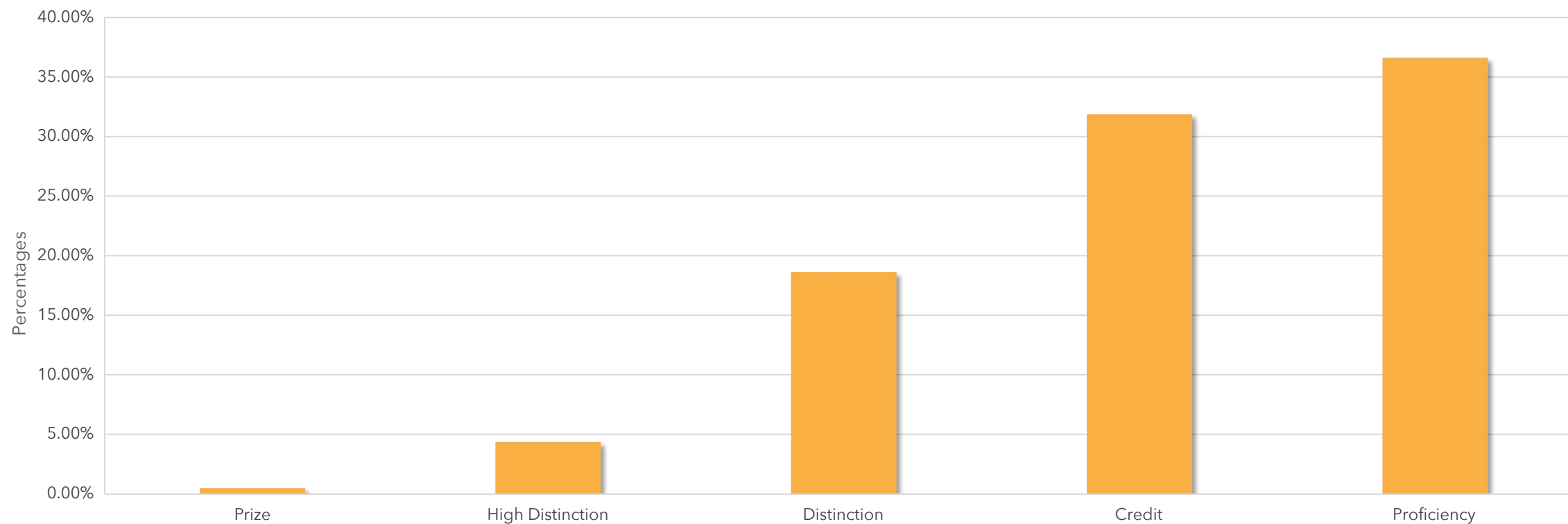
Level E



阿思丹
香港

A*SEEDER
HK

AMT
AUSTRALIAN MATHS TRUST





Conclusion

The Australian Mathematics Competition (AMC) is a world-wide interschool mathematics competition for students with a history of 44 years. The competition boasts the innovative questions and multilingual versions, which enable math lovers across the world to learn from each other and understand the importance of mathematics in life deeply. This competition aims to enrich the mathematical education for students in all ages, and provide more advanced mathematical ideas, theoretical trends and educational resources. And it encourages mathematical reasoning, precision of thought, and using basic mathematical techniques to solve interesting problems. As shown in the skills map, students in all levels shows great arithmetic capability, and 5 skills tend to be balanced among students in level A. But statistical analysis and logical reasoning skills are to be improved in higher levels, and questions about dimensional imagination are difficult in level D and E, where students aiming for higher scores should pay attention. In terms of global performance, the perfect scores appear in all levels, which show their love and great enthusiasm for math as well as the increasing demand for quality international education!

Mathematics and other basic subject education is a major concern for schools and students. The active participation of schools in the AMC also reflects the importance and necessity of top international resources in STEM. ASDAN China Limited will continue to provide more quality international education resources for Chinese students, help the development of science education and international education, and stimulate students' interest in mathematics. We hope more students will participate in our various challenges in the future!

The competition went smoothly and successfully. We look forward to seeing you next year!



American Mathematics Competitions (AMC 10 / 12)

Language
English/Chinese

Version A Date
2023.11.9

Version B Date
2023.11.15

- ★ Organized by the Mathematics Association of America (MAA)
- ★ Global authoritative youth math competition
- ★ Over 300,000 students participating annually in over 6,000 schools from 30 countries and regions
- ★ Set up Global awards and School awards
- ★ Excellent score to participate in AIME, a more challenging competition



Scan Here To Enter



阿思丹
ASEEDER^{HK}

AMT
AUSTRALIAN MATHS TRUST

Australian Mathematics Competition (AMC)

2024, see you again!

ASDAN China Limited