

2025 WSC Shenzhen Global Round Official Hotel Package JEN Shenzhen Qianhai by Shangri-La

Thank you for your interest in the 2025 World Scholar's Cup Shenzhen Global Round! To provide a comfortable trip to you, please check the following package details:

King Room Package (Entire Room) USD\$990 / 7 nights

Included: Breakfast for up to 2 people + Airport transfers for up to 2 people+Shuttle bus for up to 2 people

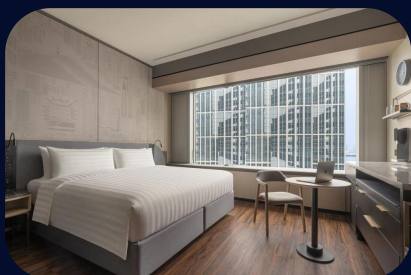
Twin Room Package (Entire Room) USD\$1,120 / 7 nights

Included: Breakfast for up to 2 people + Airport transfers for up to 2 people+Shuttle bus for up to 2 people

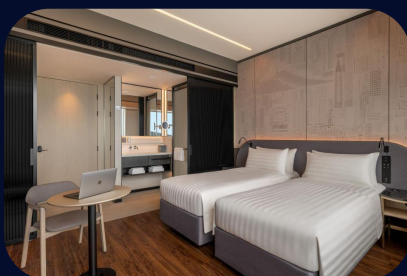
Additional Ground Transportation Fee (Optional) USD\$110 / person

For additional participants beyond the included package above, additional fee may apply.

Included: Airport transfers and shuttle buses from official hotels to main venues on the days of events.



One 2-meter king-size bed | 30m²



Two 1-meter beds | 30m²



Hotel Lobby

Package Information

1. The Hotel Package packages above are optional. Limited bed quantity, rooms will be available on a first-come, first-served basis.
2. Distance:
18.4 km from Shenzhen Bao'an International Airport; 5 km from Shenzhen Nanshan Culture & Sports Center
3. Each room package includes 7-night stays and buffet breakfasts, airport transfers, and shuttle buses service.
4. Shuttle buses will be available from the official hotel on the days of the event.
5. Check-in: after 15:00 on August 7; Check out date: before 12:00 on August 14
6. Unaccompanied Minor Check-in Policy: Only students **without guardians** must download, complete, and present the "Hotel Check-in Parental Consent Form". The form will be released 2 weeks before the round starts.

Pick-up/Drop-off details

- ★ **August 7 Pick-up:** 10:00, 12:00, 14:00, 15:00, 16:00, 17:00, 18:00, 19:00 from Shenzhen Bao'an International Airport
- ★ **August 14 Drop-off:** Departure from official hotel at 08:00, 10:00, 12:00 to Shenzhen Bao'an International Airport

Pre-Travel Notes

Further details including the final schedule, travel handbook, airport pick-up and drop-off collection form will be announced in late July by email. Please stay tuned for updates.

Refund Policy

After registration and payment:

1. Students who have paid will receive a 100% refund if the Global Round is canceled due to force majeure.
2. Students who have paid will receive a 75% refund if they apply to quit on account of personal matters on or before July 6, 2025.
3. Students who have paid will receive a 50% refund if they apply to quit on account of personal matters between July 7 and July 13, 2025.
4. Students who have paid will receive a 25% refund if they apply to quit on account of personal matters between July 14 and July 22, 2025.
5. Students who have paid will receive no refund if they apply to quit because of personal matters on or after July 23, 2025.

Address: No. 399 Qianwan 1st Road, Qianhai Rd, Shenzhen, Guangdong Province, China, 518054

Booking Link: <https://jinshuju.com/f/sqvUGH>